

ANTHEM WORKERS' COMPENSATION MEANS SERIOUS BUSINESS

BACKED BY THE MOST COMPLIANT, TRUSTED BRAND IN HEALTH CARE

The complexities of workers' compensation are more challenging than ever. With constantly shifting regulations and an almost overwhelming number of deadlines and notification obligations, the potential for an unintended and incredibly costly error is ever-present.

You can count on Anthem to help you stay one step ahead.

We've created an industry-leading system that takes the headaches, guesswork and risks out of workers' compensation. Our proprietary technology platform proactively manages regulatory requirements, and our data analytics and active management of provider relationships dramatically reduce costs while providing better outcomes—for everyone.



CONFIDENCE

We eliminate traditional compliance and implementation hassles.



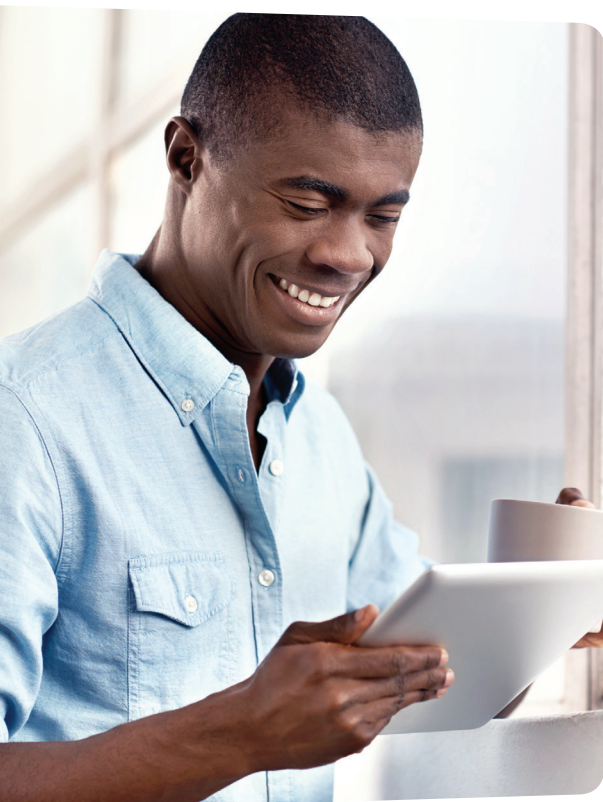
QUALITY

We help you get access to the right care from the right providers.



VALUE

We deliver lower overall costs, year after year.



INNOVATION. INTEGRATION. SIMPLIFICATION.

We're leveraging technology to create a system that takes the guesswork out of workers' compensation and simplifies the experience for everyone.

Analytic-driven network strategies

- We identify top physicians and help optimize care for injured workers.
- Proprietary data modeling assesses utilization and treatment trends for continual network refinement.

MPN customization, real-time updates and weekly refreshes

- You can add, remove or update network providers 24/7, unlike other networks that make you wait 60 to 90 days for updates to take effect.
- You can select providers at the individual level—you don't have to select an entire group.

Hands-on compliance support

- We help you stay on top of regulatory compliance requirements and keep track of the documents in case you're audited.
- We generate workers' compensation notices required by law, and we do the filing for you.

Provider verification

- Our dedicated call center continuously reaches out to providers to ensure the information in our database is correct.
- We make it easy for providers to electronically complete their MPN affirmation.

ANTHEM'S NETWORK ADVANTAGE

OUR DIRECT RELATIONSHIPS WITH PROVIDERS TRANSLATE INTO
MORE EFFECTIVE MANAGEMENT OF COSTS AND PERFORMANCE



PPO NETWORK

Available in California, Colorado, Kansas, Illinois, Indiana, Missouri and Nevada

Broad PPO network access means injured workers can easily find and see an in-network provider. Our commitment to active provider management helps drive higher quality care and better outcomes for injured workers. It helps drive savings, too. Fees in our PPO network are typically best in class, and our clients pay our negotiated rate or the state rate, whichever is less.



ANTHEM PREMIER MPN

The only true statewide network MPN in California

Since we are the MPN, you have immediate network access without an MPN filing. That means your savings start right away. We analyze every specialty in our MPN, reviewing treatment and physician performance, while keeping a keen eye on costs and quality of care.

Because we're Anthem, we have an unmatched level of clout in the industry that enables us to work on your behalf in a way no other company can. For instance, our direct contractual relationships with providers mean we can effectively impact outcomes of the MPN. We can intervene in claims that meet certain criteria. And we can make compliance easier on you because we manage data accuracy, access standards, medical access and the notification process. Plus, you can update network providers online 24/7.

LOWER OVERALL COSTS, YEAR AFTER YEAR

**BEST OVERALL SAVINGS
VS. THE COMPETITION**

**STRONG PROVIDER RELATIONSHIPS
AND SMART CONTRACTING STRATEGIES**

SUPERIOR NETWORK PERFORMANCE



Our advantages are yours

20+ years in the workers' compensation industry

One of the largest MPNs in California—
and it's ours

Broad geographic access through our
multi-state PPO network

Analytic-driven network strategies based
on our unmatched data advantage

Simplified implementations from an experienced
team of experts

An **integrated** system for compliance made easy

YOU CAN TRUST US TO GET IT RIGHT, RIGHT FROM THE START

To learn more about how we can make your job easier, call Anthem Workers' Compensation at **877-232-8440**.

Anthem Workers' Compensation™ (Anthem) is a product of Anthem Workers' Compensation™, LLC, a Limited Liability Corporation. Anthem accesses independently contracted provider networks through affiliated and other companies, which it makes available by contract to payors of workers' compensation benefits. Anthem has no control or right of control over the professional, medical judgment of independently contracted providers, and is not liable for any acts or failures to act, by independently contracted providers. Anthem is not an insurance company and has no liability for benefits under benefit plans offered or administered by employers or other payors. Anthem Workers' Compensation™ is a service mark of Anthem Workers' Compensation, LLC. Any reference in the material to other organizations or companies, including their Internet sites, is not an endorsement or warranty of the services, information or products provided by those organizations or companies. 11/2016